



**10**  
ATLAS 1919 - 2019

**ATLAS**  
SINCE 1919

 33.3 - 38 t

 180 kW (245 HP)

EU Stage V

 13.5 - 18.2 m

**STABLE.  
STRONG.  
STEADY.**



**MATERIAL HANDLING  
MACHINE 350MH**

[WWW.ATLASGMBH.COM](http://WWW.ATLASGMBH.COM)

# TECHNICAL SPECIFICATION 350MH

## ENGINE

Power rating.....180 kW (245 HP)	Bore / cylinder stroke ..... 101 / 126	<b>STANDARD BASIC EQUIPMENT:</b>
RPM ..... 1800/min	Cooling system ..... Water-cooled	• Automatic idling system / Engine stop
Model..... Deutz TCD 6.1 L6 EU Stage V	Air filter..... Dry air filter	• Cold start assistance
Design.....Turbocharger / intercooler	Battery ..... 2 x 12 V / 100 Ah	• Diesel pre-filter
Cylinder capacity ..... 6100 cm <sup>3</sup>	Generator .....28 V / 100 A	• Engine monitoring
Number of cylinders ..... 6	Starter.....24 V / 5.5 kW	

## HYDRAULIC SYSTEM

• AWE 5 system (Load sensing)	• Pipe break protection valves for lifting and articulated cylinders	• Operating modes:
• Load limit controlled high-performance pump	• Proportional grab and grab rotating function	F1 (Fine)
• Fuel-efficient flow-on-demand control	• 3 circuits for additional consumer loads possible	F2 (Eco)
• Sensitive, proportional, independent control	• Max. oil flow .....630 l/min	F3 (Power)
• Primary and secondary protection against overload	• Max. operating pressure .....320 bar	• Accumulator for emergency lowering of the arm system
• Suction valves for all work functions	• Cylinder end position damping	• Load-limit control

## SWING ASSEMBLY

• Axial piston motor with priority valve	• Automatically controlled multi-disc brake	• Swing torque ..... 103.38 kNm
• Planetary transmission	• Two, two-stage valves	• Max. swing speed ..... 8.5/min

## TRACTION DRIVE AND BRAKES

• Variable displacement motor	• Automotive traveling and cruise control:	• Tractive force..... 110 kN
• Manual gearbox	• Max. speed ..... 16 km/h	• Gradeability ..... 33 %
• Double-acting brake valve	• Off-road speed .....5 km/h	• Dual-circuit brake system ..... Drum brake
• Travel direction pre-selection via switch in joystick	• Crawling speed..... 1 km/h	• Parking brake .....Spring-loaded brake

## UNDERCARRIAGE

• Steering axle with automatic oscillating axle locking	• Heavy duty axles	• STD tires: Alliance 12.00-20
• Additional axis locking via left joystick	• Toolbox in undercarriage	

## TIRES

### OPTIONAL:

- Solid rubber, elastic 8-tyres 12.00-20

# WORKING EQUIPMENT 350MH

## DRIVER'S CAB

<ul style="list-style-type: none"> <li>• Meets latest safety standards (ROPS)</li> <li>• Extra large entry zone</li> <li>• Spacious leg room</li> <li>• Radio preparation with mute function</li> <li>• Ready for electric cooling box</li> <li>• Different options for storage, compartment for documents</li> <li>• Heat-absorbing glass, tinted windows</li> <li>• Excellent all-way visibility</li> <li>• Bottle holder</li> </ul>	<b>DRIVER'S SEAT:</b> <ul style="list-style-type: none"> <li>• Comfort seat with headrest</li> <li>• Arm rests and lumbar support</li> <li>• Seat adjustable separately from console</li> <li>• Air suspension</li> <li>• Heated</li> <li>• Horizontal and vertical suspension</li> <li>• Lumbar support</li> </ul>	<b>MONITORING:</b> <ul style="list-style-type: none"> <li>• Operating data display screen</li> <li>• Automatic system for monitoring, warning and storage of data</li> <li>• Rear view security camera</li> <li>• Right side camera</li> </ul>
	<b>CONTROL:</b> <ul style="list-style-type: none"> <li>• Ergonomic joysticks with proportional slide control</li> <li>• Slim steering column, height and tilt adjustable</li> <li>• Indicators, controls and operating switches are clearly arranged</li> <li>• Swing axle lock in the left joystick</li> </ul>	<b>CLIMATE CONTROL:</b> <ul style="list-style-type: none"> <li>• Automatic climate control</li> <li>• Excellent air distribution through optimally arranged nozzles</li> <li>• Refrigerant R134a</li> </ul>
		<b>SOUND LEVELS:</b> <ul style="list-style-type: none"> <li>• ISO 6396 (L<sub>p</sub>A) in driver's cab ..... 73 dB(A)</li> <li>• 2000/14 EG (L<sub>w</sub>A) ambience level ..... 104 dB(A)</li> </ul>

## ADDITIONAL EQUIPMENT

<ul style="list-style-type: none"> <li>• Beacon light</li> <li>• Gear protection</li> <li>• Cabin Sliding door</li> <li>• Cab protection guard</li> <li>• Cab elevation</li> <li>• Joystick steering</li> <li>• 270° camera system</li> <li>• LED working lights</li> </ul>	<ul style="list-style-type: none"> <li>• Alarm-signal while driving</li> <li>• Auxiliary heating with water circuit</li> <li>• Automatic working brake</li> <li>• Switch hydraulic attachment kit, supports separately at front and rear</li> <li>• Hydraulic add-on kit, switch supports axially separately</li> <li>• Proportional control of supports by slide in joystick</li> <li>• Automatically controlled and monitored electric central lubrication system for uppercarriage and arm equipment</li> <li>• Premium Driver seat (Actimo Evolution)</li> </ul>	<ul style="list-style-type: none"> <li>• Electric cooling box</li> <li>• Radio with USB</li> <li>• GPS/GSM telemetric system for monitoring of operating data, consumption, position</li> <li>• Biodegradable oil</li> <li>• Refueling pump</li> </ul>
		<b>Other additional equipment:</b> See price list <b>Special options:</b> upon request

## FILL CAPACITIES

• Fuel tank .....425 litres	• Engine oil..... 15 litres	• Hydraulic system.....970 litres
• Cooling system.....48 litres	• Hydraulic tank .....505 litres	• Ad Blue® ..... 32 litres

## OPERATING WEIGHTS

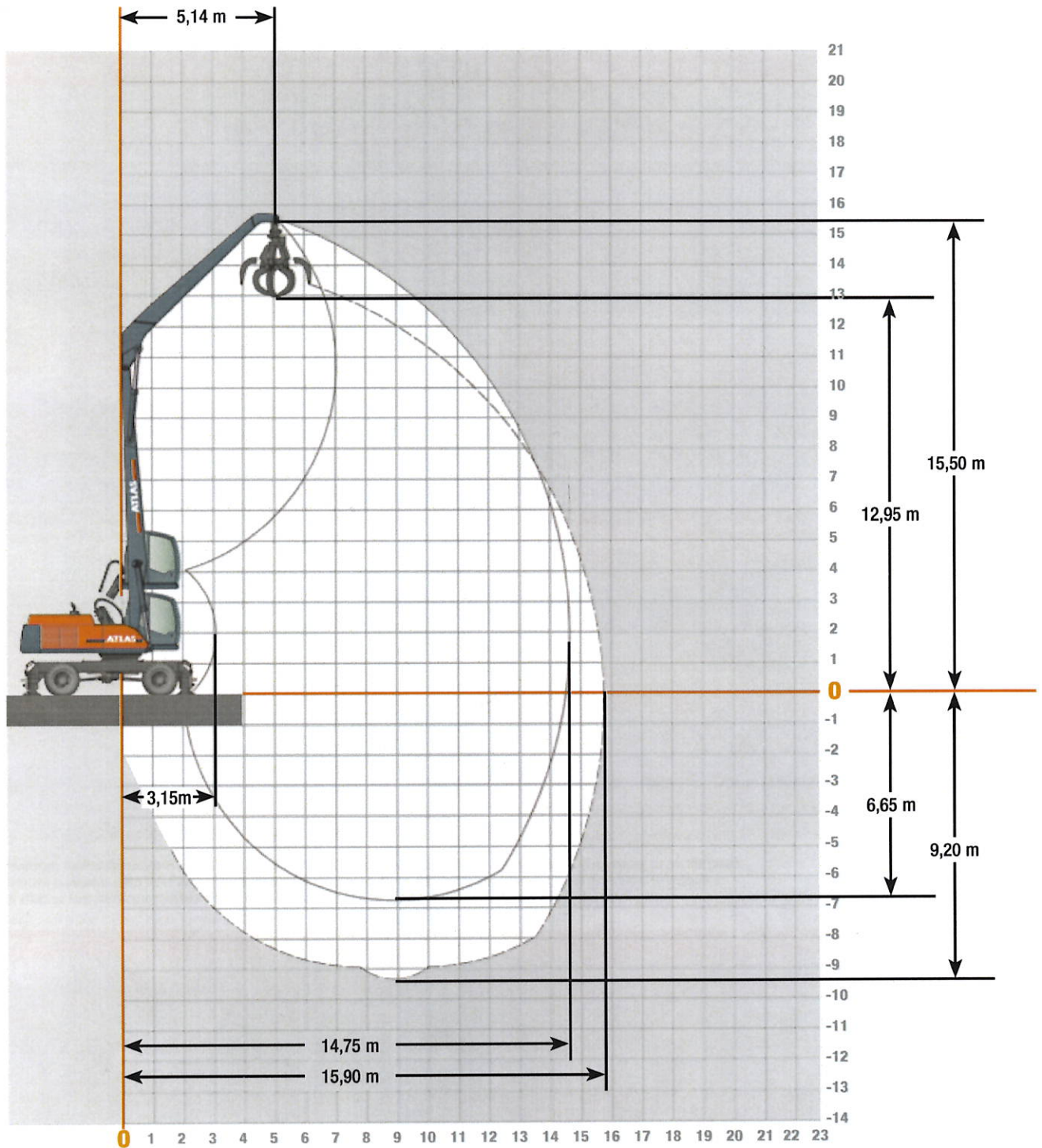
	MONOBLOCK BOOM 9.45 m (C84.6i)	MONOBLOCK BOOM 10.60 m (C84.7i)
	Stick 6.90 m (D84.16i)	Stick 7.75 m (D84.17i)
Support dozer blade		
SDB / outriggers		
4 support outriggers	36.1 t	37.4 t

Operating weight incl. driver, fuel, lubricants and coolant plus 1.0 ton for attachments

## ATTACHMENTS

<ul style="list-style-type: none"> <li>• Clamshell grab</li> <li>• Orange peel grab</li> </ul>	<ul style="list-style-type: none"> <li>• Load hook</li> <li>• Load lifting magnet</li> </ul>	<ul style="list-style-type: none"> <li>• Log grab</li> <li>• Sorting grab</li> </ul>
--	--	--

## Work areas Loading boom 8,70 m (C84.5i) and Stick 6,90 m (D84.16i)



## Lifting Capacities Loading boom 8,70 m (C84.5i) and Stick 6,90 m (D84.16i)

### Lifting Capacities, Loading boom 8,70 m (C84.5i) with Stick 6,90 m (D84.16i). Max. reach 15,90 m

HEIGHT		4,5 m		6,0 m		7,5 m		9,0 m		10,5 m		12,0 m		13,5 m		15,0 m		16,5 m	
		FRONT	LATERAL	FRONT	LATERAL	FRONT	LATERAL	FRONT	LATERAL	FRONT	LATERAL	FRONT	LATERAL	FRONT	LATERAL	FRONT	LATERAL	FRONT	LATERAL
18,0 m	outriggers down																		
	outriggers up																		
16,5 m	outriggers down																		
	outriggers up																		
15,0 m	outriggers down			8,8*	8,8*														
	outriggers up			8,8*	8,3														
13,5 m	outriggers down					7,1*	7,1*	6,2*	6,2*										
	outriggers up					7,1*	6	6,2*	4,4										
12,0 m	outriggers down					6,9*	6,9*	6,1*	6,1*	5,5*	5,5*								
	outriggers up					6,9*	6,1	6,1*	4,5	5,3	3,4								
10,5 m	outriggers down					6,6*	6,6*	6,1*	6,1*	5,4*	5,4*	4,9*	4,9*						
	outriggers up					6,6*	6,2	6,1*	4,8	5,4	3,5	4,2	2,6						
9,0 m	outriggers down					6,6*	6,6*	6,1*	6,1*	5,5*	5,5*	4,9*	4,9*						
	outriggers up					6,9*	6,1	6,1*	4,5	5,4	3,4	4,3	2,7						
7,5 m	outriggers down					7,2*	7,2*	6,2*	6,2*	5,5*	5,5*	4,9*	4,9*	4,3*	4,3*				
	outriggers up					7,2*	6	6,2*	4,4	5,3	3,4	4,2	2,6	3,4	2,1				
6,0 m	outriggers down			9,1*	9,1*	7,6*	7,6*	6,5*	6,5*	5,7*	5,7*	5*	5*	4,3*	4,3				
	outriggers up			9,1*	8,1	7,6*	5,7	6,5*	4,2	5,2	3,3	4,1	2,6	3,4	2				
4,5 m	outriggers down	12,3*	12,3*	9,8*	9,8*	8*	8*	6,7*	6,7*	5,8*	5,8*	5*	5*	4,3*	4,3				
	outriggers up	12,3*	11,8	9,8*	7,8	8*	5,4	6,4	4	5	3,1	4	2,5	3,3	2				
3,0 m	outriggers down	14,8*	14,8*	10,7*	10,7*	8,4*	8,4*	6,9*	6,9*	5,8*	5,8*	5*	5*	4,3*	4,3				
	outriggers up	14,8*	10,3	10,7*	6,8	8,1	4,9	6,1	3,8	4,8	3	3,9	2,4	3,2	1,9				
1,5 m	outriggers down	7*	7*	11,1*	11,1*	8,6*	8,6*	7*	7*	5,8*	5,8*	4,9*	4,9*	4,1*	4,1				
	outriggers up	7*	7*	10,7	6,1	7,7	4,5	5,8	3,5	4,7	2,8	3,8	2,2	3,2	1,8				
0 m	outriggers down	4,8*	4,8*	10,0*	10,0*	8,5*	8,5*	6,9*	6,9*	5,7*	5,7*	4,7*	4,7*	3,9*	3,9*				
	outriggers up	4,8*	4,8*	10,1	5,6	7,3	4,2	5,6	3,3	4,5	2,6	3,7	2,2	3,1	1,8				
-1,5 m	outriggers down			10*	10*	8*	8*	6,5*	6,5*	5,3*	5,3*	4,4*	4,4*	3,5*	3,5*				
	outriggers up			9,7	5,3	7	4	5,5	3,1	4,4	2,5	3,6	2,1	3,1	1,7				
-3,0 m	outriggers down			8,6*	8,6*	7,1*	7,1*	5,8*	5,8*	4,6*	4,6*	3,6*	3,6*	2,9*	2,9*				
	outriggers up			8,6*	5,2	6,9	3,9	5,3	3	4,3	2,5	3,6	2	2,9*	1,7				
-4,5 m	outriggers down			6,8*	6,8*	5,6*	5,6*	4,8*	4,8*	3,9*	3,9*	3*	3*						
	outriggers up			6,8*	5,2	5,8*	3,8	4,8*	3	3,9*	2,5	3*	2						
-6,0 m	outriggers down					4,2*	4,2*	3,5*	3,5*	2,8*	2,8*								
	outriggers up					4,2	3,9	3,5*	3	2,8*	2,5								
-7,5 m	outriggers down																		
	outriggers up																		

The specified max. loading capacities in tonnes include a stability of 33% or are calculated at 87% of the hydraulic lifting power, as per ISO10567. These values are applicable at the tip of the arm with optimum positioning of the corresponding arm system. \* Value limited due to hydraulics. Weights of attached load carrying accessories (grab, magnet, load hook, etc.) are not included with the load carrying values.

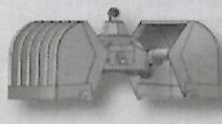
#### Attachments



Load hook



Log grab



Clamshell grab



Orange peel grab



Load lifting magnet