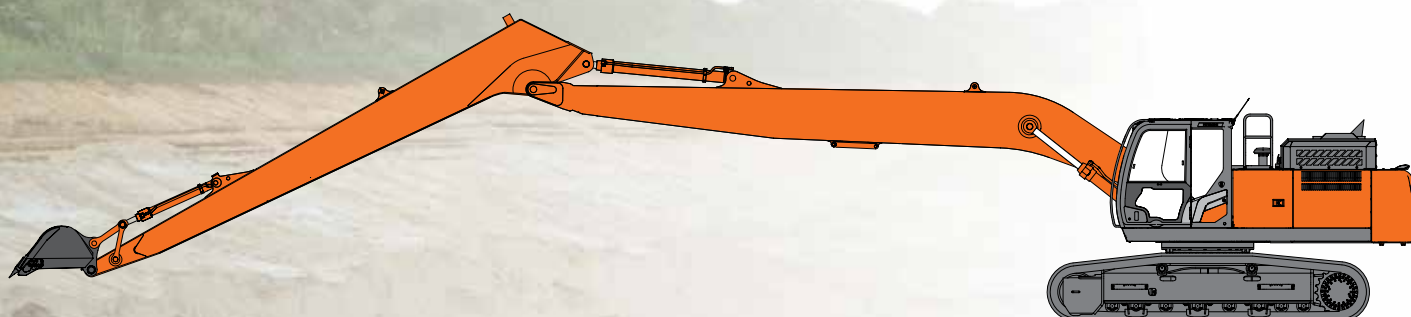


SUPER LONG FRONT

ZAXIS 250_{LC}/ZAXIS 300_{LC}/ZAXIS 350_{LC}

A P P L I C A T I O N & A T T A C H M E N T



HYDRAULIC EXCAVATOR

Model code : ZX250LC-7 / ZX250LCN-7
Engine rated power : 140 kW (ISO14396)
Operating weight : 28 700 – 30 000 kg
Bucket ISO heaped : 0.40-0.66 m³

Model code : ZX300LC-7 / ZX300LCN-7
Engine rated power : 197 kW (ISO14396)
Operating weight : 33 000 – 34 300 kg
Bucket ISO heaped : 0.40-0.82 m³

Model code : ZX350LC-7 / ZX350LCN-7
Engine rated power : 210 kW (ISO14396)
Operating weight : 38 100 – 39 500 kg
Bucket ISO heaped : 0.40-1.40 m³

SPECIFICATIONS

ZX250LC / ZX250LCN

ENGINE

Model	Isuzu 4HK1X
Type	4-cycle water-cooled, common rail direct injection
Aspiration	Variable geometry turbocharged, intercooled, cooled EGR
Aftertreatment	DOC+CSF+SCR system
No. of cylinders	4
Rated power	
ISO 14396	140 kW at 2 000 min ⁻¹
ISO 9249, net	132 kW at 2 000 min ⁻¹
SAE J1349, net	132 kW at 2 000 min ⁻¹
Maximum torque	676 Nm at 1 800 min ⁻¹
Piston displacement	5.193 L
Bore and stroke	115 mm x 125 mm
Batteries	2 x 12 V / 120 Ah

HYDRAULIC SYSTEM

Hydraulic Pumps

Main pumps	3 variable displacement axial piston pumps
Maximum oil flow	2 x 224 L/min 1 x 194 L/min
Pilot pump	1 gear pump
Maximum oil flow	35.5 L/min

Hydraulic Motors

Travel	2 variable displacement axial piston motors
Swing	1 axial piston motor

Relief Valve Settings

Implement circuit	34.3 MPa
Swing circuit	32.4 MPa
Travel circuit	34.3 MPa
Pilot circuit	3.9 MPa
Power boost	38.0 MPa

Hydraulic Cylinders

ZX250LC / ZX250LCN TYPE HE15LD & HE18LD SUPER LONG FRONT

	Quantity	Bore	Rod diameter
Boom	2	125 mm	90 mm
Arm	1	150 mm	105 mm
Bucket	1	105 mm	75 mm

UPPERSTRUCTURE

Revolving Frame

D-section frame for resistance to deformation.

Swing Device

Axial piston motor with planetary reduction gear is bathed in oil. Swing circle is single-row. Swing parking brake is spring-set/hydraulic-released disc type.

Swing speed	7.2 min ⁻¹ (rpm)
Swing torque	61.0 kNm (6 220 kgfm)

UNDERCARRIAGE

Tracks

Heat-treated connecting pins with dirt seals. Hydraulic (grease) track adjusters with shock-absorbing recoil springs.

Numbers of Rollers and Shoes on Each Side

	ZX250LC / ZX250LCN
Upper rollers	2
Lower rollers	9
Track shoes	51
Track guards	3

Travel Device

Each track driven by 2-speed axial piston motor. Parking brake is spring-set/hydraulic-released disc type. Automatic transmission system: High-Low.

Travel speeds	High : 0 to 5.5 km/h Low : 0 to 3.4 km/h
Maximum traction force	215 kN
Gradeability	70% (35 degree) continuous

SOUND LEVEL

Sound level in cab according to ISO 6396 LpA 67 dB(A)
External sound level according to ISO 6395 and
EU Directive 2000/14/EC LwA 101 dB(A)

SERVICE REFILL CAPACITIES

	ZX250LC / ZX250LCN
Fuel tank	510.0 L
Engine coolant	31.0 L
Engine oil	29.0 L
Swing device	9.3 L
Travel device (each side)	7.8 L
Hydraulic system	294.0 L
Hydraulic oil tank	156.0 L
DEF/AdBlue® tank	70.0 L

SPECIFICATIONS

ZX250LC / ZX250LCN

WEIGHTS AND GROUND PRESSURE

ZX250LC TYPE HE15LD SUPER LONG FRONT:

Equipped with 8.50 m monoblock boom, 5.93 m arm and 0.66 m³ bucket (SAE, PCSA heaped), 7 750 kg counterweight.

Shoe type	Shoe width	Operating weight	Ground pressure
Triple grouser	600 mm	28 700 kg	57 kPa (0.58 kgf/cm ²)
	700 mm	29 100 kg	50 kPa (0.51 kgf/cm ²)
	800 mm	29 400 kg	44 kPa (0.45 kgf/cm ²)
	900 mm	29 900 kg	40 kPa (0.41 kgf/cm ²)

ZX250LCN TYPE HE15LD SUPER LONG FRONT:

Equipped with 8.50 m monoblock boom, 5.93 m arm and 0.66 m³ bucket (SAE, PCSA heaped), 7 750 kg counterweight.

Shoe type	Shoe width	Operating weight	Ground pressure
Triple grouser	600 mm	28 700 kg	57 kPa (0.58 kgf/cm ²)
	700 mm	29 000 kg	50 kPa (0.51 kgf/cm ²)
	800 mm	29 300 kg	44 kPa (0.45 kgf/cm ²)
	900 mm	29 800 kg	40 kPa (0.41 kgf/cm ²)

ZX250LC TYPE HE18LD SUPER LONG FRONT:

Equipped with 10.23 m monoblock boom, 7.28 m arm and 0.4 m³ bucket (SAE, PCSA heaped), 7 750 kg counterweight.

Shoe type	Shoe width	Operating weight	Ground pressure
Triple grouser	600 mm	28 900 kg	58 kPa (0.59 kgf/cm ²)
	700 mm	29 200 kg	50 kPa (0.51 kgf/cm ²)
	800 mm	29 500 kg	44 kPa (0.45 kgf/cm ²)
	900 mm	30 000 kg	40 kPa (0.41 kgf/cm ²)

ZX250LCN TYPE HE18LD SUPER LONG FRONT:

Equipped with 10.23 m monoblock boom, 7.28 m arm and 0.4 m³ bucket (SAE, PCSA heaped), 7 750 kg counterweight.

Shoe type	Shoe width	Operating weight	Ground pressure
Triple grouser	600 mm	28 800 kg	58 kPa (0.59 kgf/cm ²)
	700 mm	29 100 kg	50 kPa (0.51 kgf/cm ²)
	800 mm	29 400 kg	44 kPa (0.45 kgf/cm ²)
	900 mm	29 900 kg	40 kPa (0.41 kgf/cm ²)

BUCKET SPECIFICATIONS AND COMPATIBILITY

ZX250LC / ZX250LCN

	Capacity ISO heaped	Width Without side cutters	Weight	Recommendation			
				ZX250LC		ZX250LCN	
				HE15LD	HE18LD	HE15LD	HE18LD
Bucket radius 1230 mm	0.40 m ³	720 mm	340 kg	◎	○	◎	□
	0.45 m ³	800 mm	370 kg	◎	□	◎	□
	0.50 m ³	890 mm	390 kg	◎	□	◎	-
	0.59 m ³	950 mm	410 kg	◎	-	◎	-
	0.66 m ³	1 030 mm	430 kg	◎	-	○	-
Slope finishing	-	1 600 mm	430 kg	◇	◇	◇	◇
Max. weight				1 690 kg	1 050 kg	1 560 kg	940 kg

◎ Suitable for materials with density of 1 800 kg/m³ or less

○ Suitable for materials with density of 1 600 kg/m³ or less

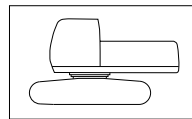
□ Suitable for materials with density of 1 100 kg/m³ or less

◇ Slope-finishing service

- Not applicable

• Use the bucket in the range where the total weight of bucket and loading material does not exceed maximum weight described above.

Basic Machine Weight and Overall width



Excluding front end attachment, additional counterweight, fuel, hydraulic oil and coolant etc.

Including counterweight.

ZX250LC

Shoe width	Weight	Overall width
600 mm	23 400 kg	3 190 mm
700 mm	23 700 kg	3 290 mm
800 mm	24 000 kg	3 390 mm
900 mm	24 500 kg	3 490 mm

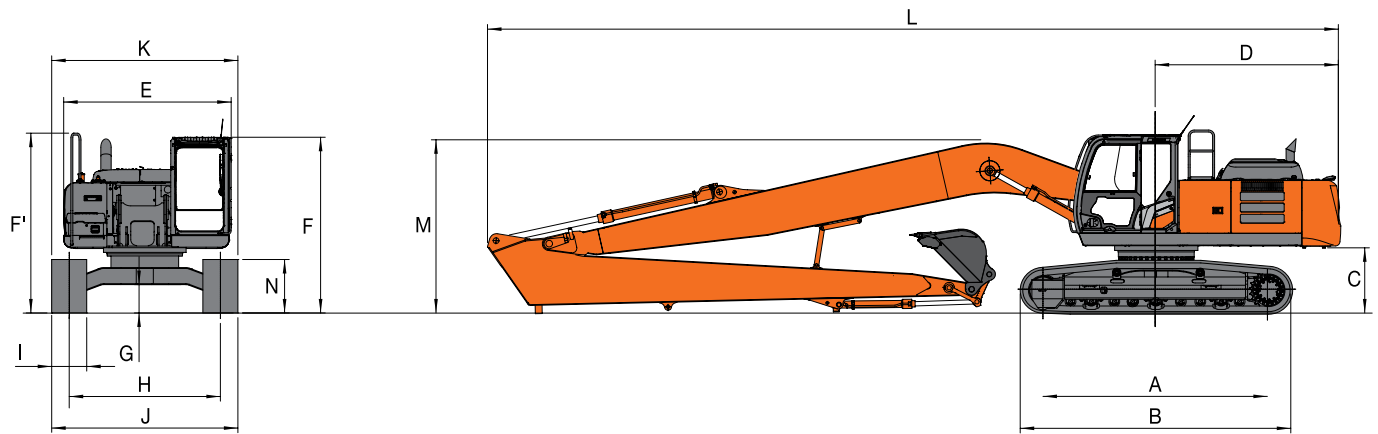
ZX250LCN

Shoe width	Weight	Overall width
600 mm	23 300 kg	2 990 mm
700 mm	23 600 kg	3 090 mm
800 mm	23 900 kg	3 190 mm
900 mm	24 400 kg	3 290 mm

SPECIFICATIONS

ZX250LC / ZX250LCN

DIMENSIONS



Unit: mm

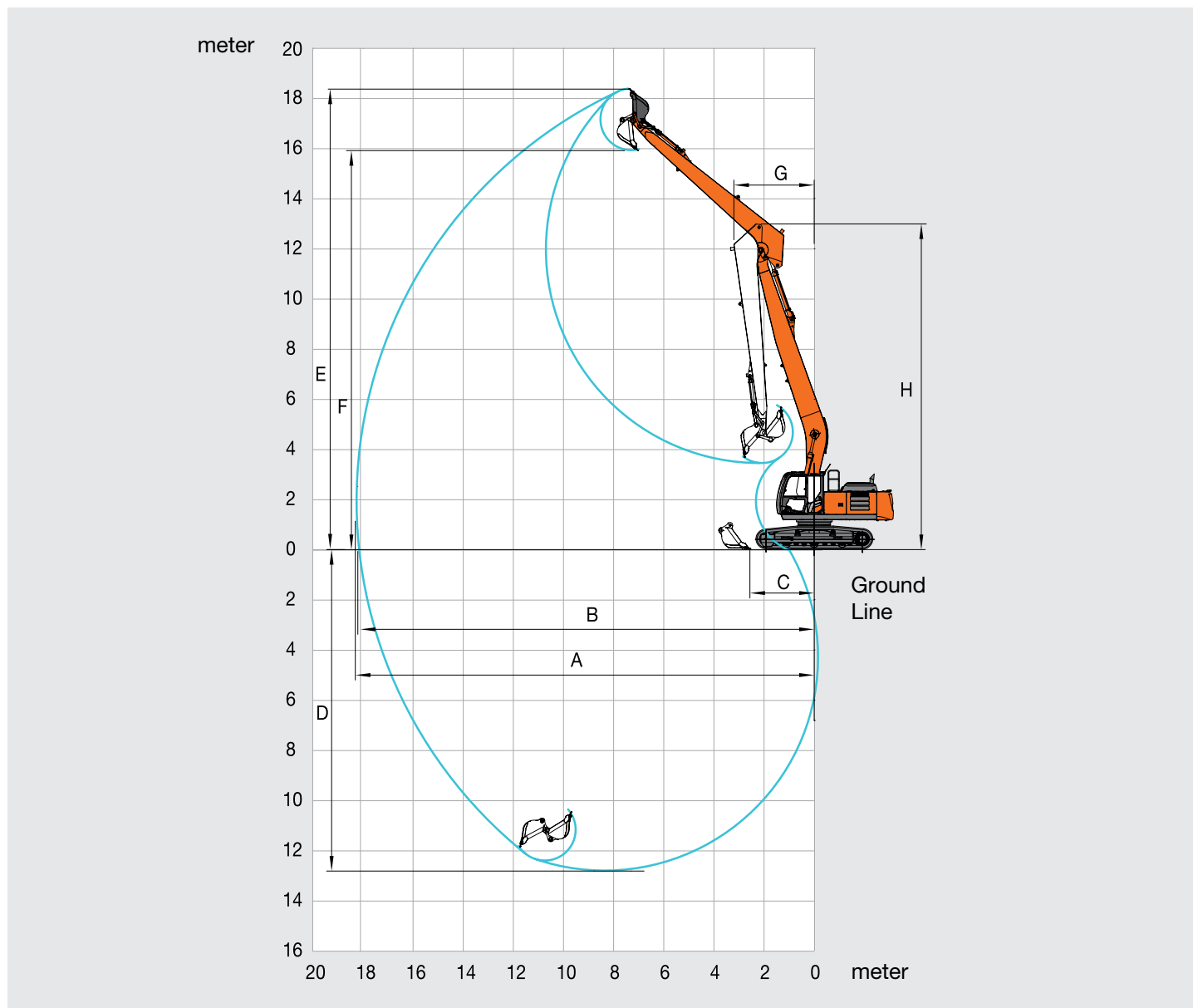
	ZX250LC TYPE HE18LD	ZX250LCN TYPE HE18LD
A Distance between tumbler	3 850	3 850
B Undercarriage length	4 640	4 640
*C Counterweight clearance	1 050	1 050
D Rear-end swing radius	3 140	3 140
E Overall width of upperstructure	2 870	2 870
F Overall height of cab	3 010	3 010
*G Min. ground clearance	460	460
H Track gauge	2 590	2 390
I Track shoe width	600 / 700 / 800 / 900	600 / 700 / 800 / 900
J Undercarriage width	3 190 / 3 290 / 3 390 / 3 490	2 990 / 3 090 / 3 190 / 3 290
K Overall width	3 190 / 3 290 / 3 390 / 3 490	2 990 / 3 090 / 3 190 / 3 290
L Overall length	14 580	14 580
M Overall height of boom	3 030	3 030
N Track height with triple grouser shoes	920	920

•* : Excluding track shoe lug

SPECIFICATIONS

ZX250LC / ZX250LCN

WORKING RANGES



Unit: mm

	ZX250LC / ZX250LCN TYPE HE18LD
A Max. digging reach	18 200
B Max. digging reach (on ground)	18 100
C Max. level crowding distance	2 560
D Max. digging depth	12 760
E Max. cutting height	18 360
F Miax. dumping height	15 910
G Min. swing radius	3 210
H Miin. Swing radius height	12 990
Bucket digging force ISO	74 kN (7 550 kgf)
Arm crowd force ISO	49 kN (5 000 kgf)

• Excluding track shoe lug

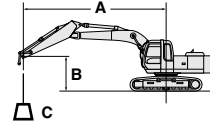
Note: Working range can be changed, depending on bucket size.

MACHINE CAPACITIES

ZX250LC / ZX250LCN

Metric measure

- Notes:
1. Ratings are based on ISO 10567.
 2. Machine capacity of the ZAXIS series does not exceed 75% of tipping load with the machine on firm, level ground or 87% full hydraulic capacity.
 3. The load point is the center-line of the bucket pivot mounting pin on the arm.
 4. * Indicates load limited by hydraulic capacity.
 5. 0m = Ground.
- For machine capacities, subtract bucket and quick hitch weight from machine capacities.



A: Load radius
B: Load point height
C: Machine capacity

ZX250LC TYPE HE18LD SUPER LONG FRONT

Rating over-front

Rating over-side or 360 degrees

Unit: kg

Conditions	Load point height (m)	Load radius (m)											
		3.0		4.5		6.0		7.5		9.0		10.5	
Boom 10.23 m	15.0											1 580*	1 580*
Arm 7.28 m	13.5											1 650*	1 650*
Counterweight	12.0												
7 750 kg	10.5											1 620*	1 620*
600 mm grouser shoe	9.0											1 680*	1 680*
	7.5											1 770*	1 770*
	6.0											1 890*	1 890*
	4.5											2 020*	2 020*
	3.0			5 990*	5 990*	3 600*	3 600*	2 850*	2 850*	2 370*	2 370*	2 170*	2 170*
	1.5			2 640*	2 640*	4 660*	4 660*	3 510*	3 510*	2 800*	2 800*	2 320*	2 320*
0 (Ground)	0	640*	640*	2 200*	2 200*	5 000*	5 000*	3 750*	3 750*	2 970*	2 970*	2 440*	2 440*
	-1.5	1 350*	1 350*	2 500*	2 500*	4 960*	4 960*	3 900*	3 900*	3 090*	3 090*	2 530*	2 480*
	-3.0	2 060*	2 060*	3 070*	3 070*	5 120*	5 120*	3 940*	3 780*	3 140*	2 950*	2 580*	2 380*
	-4.5	2 810*	2 810*	3 810*	3 810*	4 970*	4 970*	3 880*	3 730*	3 120*	2 890*	2 560*	2 330*
	-6.0	3 620*	3 620*	4 680*	4 680*	4 680*	4 680*	3 710*	3 710*	3 010*	2 890*	2 470*	2 320*
	-7.5	4 520*	4 520*	5 410*	5 410*	4 250*	4 250*	3 420*	3 420*	2 790*	2 790*	2 290*	2 290*
	-9.0	5 570*	5 570*	4 540*	4 540*	3 650*	3 650*	2 970*	2 970*	2 430*	2 430*	1 960*	1 960*
	-10.5			3 380*	3 380*	2 810*	2 810*	2 320*	2 320*	1 870*	1 870*	1 420*	1 420*

Conditions	Load point height (m)	Load radius (m)						At max. reach				
		12.0		13.5		15.0		16.5		meter		
Boom 10.23 m	15.0									1 450*	1 450*	10.6
Arm 7.28 m	13.5	1 570*	1 570*							1 300*	1 300*	12.3
Counterweight	12.0	1 510*	1 510*	1 280*	1 280*					1 220*	1 220*	13.6
7 750 kg	10.5	1 510*	1 510*	1 420*	1 420*					1 170*	1 170*	14.6
600 mm grouser shoe	9.0	1 540*	1 540*	1 430*	1 430*	1 350*	1 350*			1 130*	1 130*	15.4
	7.5	1 600*	1 600*	1 460*	1 460*	1 360*	1 360*			1 130*	1 130*	16.0
	6.0	1 680*	1 680*	1 510*	1 510*	1 390*	1 390*			1 150*	1 150*	16.4
	4.5	1 770*	1 770*	1 580*	1 580*	1 430*	1 430*	1 310*	1 310*	1 170*	1 170*	16.7
	3.0	1 880*	1 880*	1 650*	1 650*	1 470*	1 470*	1 330*	1 270*	1 200*	1 200*	16.9
	1.5	1 980*	1 980*	1 720*	1 720*	1 520*	1 510*	1 350*	1 240*	1 270*	1 170*	16.9
0 (Ground)	0	2 060*	2 060*	1 780*	1 780*	1 760*	1 450*	1 350*	1 200*	1 310*	1 160*	16.8
	-1.5	2 130*	2 030*	1 820*	1 680*	1 570*	1 400*	1 340*	1 180*	1 320*	1 170*	16.6
	-3.0	2 160*	1 960*	1 830*	1 630*	1 550*	1 380*			1 330*	1 220*	16.2
	-4.5	2 140*	1 920*	1 790*	1 610*	1 480*	1 380*			1 330*	1 300*	15.7
	-6.0	2 050*	1 920*	1 690*	1 620*					1 330*	1 330*	15.0
	-7.5	1 870*	1 870*	1 470*	1 470*					1 300*	1 300*	14.1
	-9.0	1 530*	1 530*							1 230*	1 230*	12.9
	-10.5									1 080*	1 080*	11.5

ZX250LCN TYPE HE18LD SUPER LONG FRONT

Rating over-front

Rating over-side or 360 degrees

Unit: kg

Conditions	Load point height (m)	Load radius (m)											
		3.0		4.5		6.0		7.5		9.0		10.5	
Boom 10.23 m	15.0											1 580*	1 580*
Arm 7.28 m	13.5											1 650*	1 650*
Counterweight	12.0												
7 750 kg	10.5											1 620*	1 620*
600 mm grouser shoe	9.0											1 680*	1 680*
	7.5											1 770*	1 770*
	6.0											1 890*	1 890*
	4.5											2 020*	2 020*
	3.0			5 990*	5 990*	3 600*	3 600*	2 850*	2 850*	2 370*	2 370*	2 170*	2 170*
	1.5			2 640*	2 640*	4 660*	4 660*	3 510*	3 510*	2 800*	2 800*	2 320*	2 320*
0 (Ground)	0	640*	640*	2 200*	2 200*	5 000*	5 000*	3 750*	3 750*	2 970*	2 970*	2 440*	2 410*
	-1.5	1 350*	1 350*	2 500*	2 500*	4 960*	4 790*	3 900*	3 580*	3 090*	2 810*	2 530*	2 260*
	-3.0	2 060*	2 060*	3 070*	3 070*	5 120*	4 660*	3 940*	3 440*	3 140*	2 690*	2 580*	2 160*
	-4.5	2 810*	2 810*	3 810*	3 810*	4 970*	4 650*	3 880*	3 390*	3 120*	2 630*	2 560*	2 110*
	-6.0	3 620*	3 620*	4 680*	4 680*	4 680*	4 680*	3 710*	3 410*	3 010*	2 630*	2 470*	2 110*
	-7.5	4 520*	4 520*	5 410*	5 410*	4 250*	4 250*	3 420*	3 420*	2 790*	2 680*	2 290*	2 150*
	-9.0	5 570*	5 570*	4 540*	4 540*	3 650*	3 650*	2 970*	2 970*	2 430*	2 430*	1 960*	1 960*
	-10.5			3 380*	3 380*	2 810*	2 810*	2 320*	2 320*	1 870*	1 870*	1 420*	1 420*

Conditions	Load point height (m)	Load radius (m)						At max. reach				
		12.0		13.5		15.0		16.5		meter		
Boom 10.23 m	15.0									1 450*	1 450*	10.6
Arm 7.28 m	13.5	1 570*	1 570*							1 300*	1 300*	12.3
Counterweight	12.0	1 510*	1 510*	1 280*	1 280*					1 220*	1 220*	13.6
7 750 kg	10.5	1 510*	1 510*	1 420*	1 420*					1 170*	1 170*	14.6
600 mm grouser shoe	9.0	1 540*	1 540*	1 430*	1 430*	1 350*	1 350*			1 130*	1 130*	15.4
	7.5	1 600*	1 600*	1 460*	1 460*	1 360*	1 360*			1 130*	1 130*	16.0
	6.0	1 680*	1 680*	1 510*	1 510*	1 390*	1 390*			1 150*	1 150*	16.4
	4.5	1 770*	1 770*	1 580*	1 580*	1 430*	1 430*	1 310*	1 180*	1 170*	1 140*	16.7
	3.0	1 880*	1 880*	1 650*	1 650*	1 470*	1 440*	1 330*	1 150*	1 200*	1 080*	16.9
	1.5	1 980*	1 980*	1 720*	1 690*	1 520*	1 370*	1 350*	1 110*	1 270*	1 040*	16.9
0 (Ground)	0	2 060*	1 950*	1 780*	1 600*	1 550*	1 310*	1 350*	1 080*	1 310*	1 040*	16.8
	-1.5	2 130*	1 850*	1 820*	1 520*	1 570*	1 260*	1 340*	1 060*	1 320*	1 050*	16.6
	-3.0	2 160*	1 780*	1 830*	1 470*	1 550*	1 240*			1 330*	1 090*	16.2
	-4.5	2 140*	1 740*	1 790*	1 450*	1 480*	1 240*			1 330*	1 170*	15.7
	-6.0	2 050*	1 740*	1 690*	1 470*					1 330*	1 280*	15.0
	-7.5	1 870*	1 780*	1 470*	1 470*					1 300*	1 300*	14.1
	-9.0	1 530*	1 530*							1 230*	1 230*	12.9
	-10.5									1 080*	1 080*	11.5