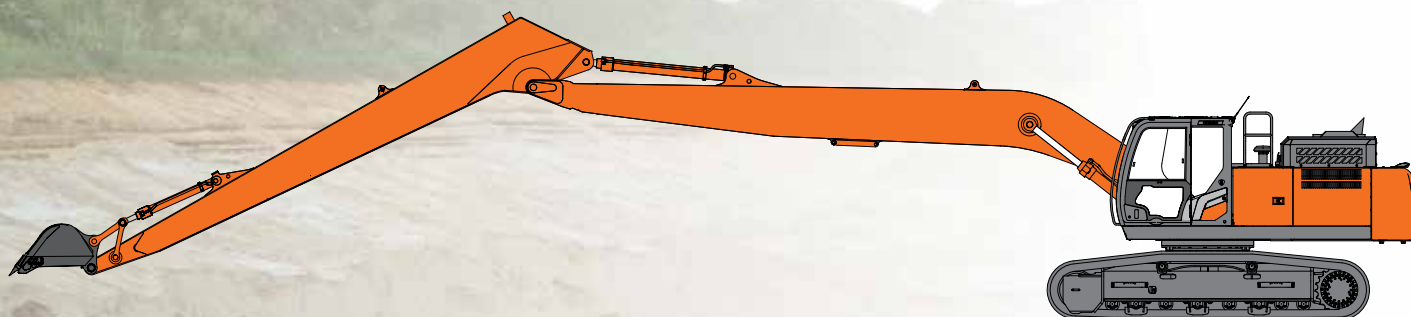


# SUPER LONG FRONT

ZAXIS 250<sub>LC</sub>/ZAXIS 300<sub>LC</sub>/ZAXIS 350<sub>LC</sub>

A P P L I C A T I O N   &   A T T A C H M E N T



## HYDRAULIC EXCAVATOR

**Model code :** ZX250LC-7 / ZX250LCN-7  
**Engine rated power :** 140 kW (ISO14396)  
**Operating weight :** 28 700 – 30 000 kg  
**Bucket ISO heaped :** 0.40-0.66 m<sup>3</sup>

**Model code :** ZX300LC-7 / ZX300LCN-7  
**Engine rated power :** 197 kW (ISO14396)  
**Operating weight :** 33 000 – 34 300 kg  
**Bucket ISO heaped :** 0.40-0.82 m<sup>3</sup>

**Model code :** ZX350LC-7 / ZX350LCN-7  
**Engine rated power :** 210 kW (ISO14396)  
**Operating weight :** 38 100 – 39 500 kg  
**Bucket ISO heaped :** 0.40-1.40 m<sup>3</sup>

# SPECIFICATIONS

## ZX250LC / ZX250LCN

### ENGINE

Model .....	Isuzu 4HK1X
Type .....	4-cycle water-cooled, common rail direct injection
Aspiration .....	Variable geometry turbocharged, intercooled, cooled EGR
Aftertreatment .....	DOC+CSF+SCR system
No. of cylinders .....	4
Rated power	
ISO 14396 .....	140 kW at 2 000 min <sup>-1</sup>
ISO 9249, net .....	132 kW at 2 000 min <sup>-1</sup>
SAE J1349, net .....	132 kW at 2 000 min <sup>-1</sup>
Maximum torque .....	676 Nm at 1 800 min <sup>-1</sup>
Piston displacement .....	5.193 L
Bore and stroke .....	115 mm x 125 mm
Batteries .....	2 x 12 V / 120 Ah

### HYDRAULIC SYSTEM

#### Hydraulic Pumps

Main pumps .....	3 variable displacement axial piston pumps
Maximum oil flow .....	2 x 224 L/min 1 x 194 L/min
Pilot pump .....	1 gear pump
Maximum oil flow .....	35.5 L/min

#### Hydraulic Motors

Travel .....	2 variable displacement axial piston motors
Swing .....	1 axial piston motor

#### Relief Valve Settings

Implement circuit .....	34.3 MPa
Swing circuit .....	32.4 MPa
Travel circuit .....	34.3 MPa
Pilot circuit .....	3.9 MPa
Power boost .....	38.0 MPa

#### Hydraulic Cylinders

#### ZX250LC / ZX250LCN TYPE HE15LD & HE18LD SUPER LONG FRONT

	Quantity	Bore	Rod diameter
Boom	2	125 mm	90 mm
Arm	1	150 mm	105 mm
Bucket	1	105 mm	75 mm

### UPPERSTRUCTURE

#### Revolving Frame

D-section frame for resistance to deformation.

#### Swing Device

Axial piston motor with planetary reduction gear is bathed in oil. Swing circle is single-row. Swing parking brake is spring-set/hydraulic-released disc type.

Swing speed .....	7.2 min <sup>-1</sup> (rpm)
Swing torque .....	61.0 kNm (6 220 kgfm)

### UNDERCARRIAGE

#### Tracks

Heat-treated connecting pins with dirt seals. Hydraulic (grease) track adjusters with shock-absorbing recoil springs.

#### Numbers of Rollers and Shoes on Each Side

	ZX250LC / ZX250LCN
Upper rollers	2
Lower rollers	9
Track shoes	51
Track guards	3

#### Travel Device

Each track driven by 2-speed axial piston motor. Parking brake is spring-set/hydraulic-released disc type. Automatic transmission system: High-Low.

Travel speeds .....	High : 0 to 5.5 km/h Low : 0 to 3.4 km/h
Maximum traction force .....	215 kN
Gradeability .....	70% (35 degree) continuous

### SOUND LEVEL

Sound level in cab according to ISO 6396 ..... LpA 67 dB(A)  
External sound level according to ISO 6395 and  
EU Directive 2000/14/EC ..... LwA 101 dB(A)

### SERVICE REFILL CAPACITIES

	ZX250LC / ZX250LCN
Fuel tank	510.0 L
Engine coolant	31.0 L
Engine oil	29.0 L
Swing device	9.3 L
Travel device (each side)	7.8 L
Hydraulic system	294.0 L
Hydraulic oil tank	156.0 L
DEF/AdBlue® tank	70.0 L

# SPECIFICATIONS

## ZX250LC / ZX250LCN

### WEIGHTS AND GROUND PRESSURE

#### ZX250LC TYPE HE15LD SUPER LONG FRONT:

Equipped with 8.50 m monoblock boom, 5.93 m arm and 0.66 m<sup>3</sup> bucket (SAE, PCSA heaped), 7 750 kg counterweight.

Shoe type	Shoe width	Operating weight	Ground pressure
Triple grouser	600 mm	28 700 kg	57 kPa (0.58 kgf/cm <sup>2</sup> )
	700 mm	29 100 kg	50 kPa (0.51 kgf/cm <sup>2</sup> )
	800 mm	29 400 kg	44 kPa (0.45 kgf/cm <sup>2</sup> )
	900 mm	29 900 kg	40 kPa (0.41 kgf/cm <sup>2</sup> )

#### ZX250LCN TYPE HE15LD SUPER LONG FRONT:

Equipped with 8.50 m monoblock boom, 5.93 m arm and 0.66 m<sup>3</sup> bucket (SAE, PCSA heaped), 7 750 kg counterweight.

Shoe type	Shoe width	Operating weight	Ground pressure
Triple grouser	600 mm	28 700 kg	57 kPa (0.58 kgf/cm <sup>2</sup> )
	700 mm	29 000 kg	50 kPa (0.51 kgf/cm <sup>2</sup> )
	800 mm	29 300 kg	44 kPa (0.45 kgf/cm <sup>2</sup> )
	900 mm	29 800 kg	40 kPa (0.41 kgf/cm <sup>2</sup> )

#### ZX250LC TYPE HE18LD SUPER LONG FRONT:

Equipped with 10.23 m monoblock boom, 7.28 m arm and 0.4 m<sup>3</sup> bucket (SAE, PCSA heaped), 7 750 kg counterweight.

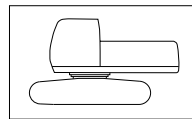
Shoe type	Shoe width	Operating weight	Ground pressure
Triple grouser	600 mm	28 900 kg	58 kPa (0.59 kgf/cm <sup>2</sup> )
	700 mm	29 200 kg	50 kPa (0.51 kgf/cm <sup>2</sup> )
	800 mm	29 500 kg	44 kPa (0.45 kgf/cm <sup>2</sup> )
	900 mm	30 000 kg	40 kPa (0.41 kgf/cm <sup>2</sup> )

#### ZX250LCN TYPE HE18LD SUPER LONG FRONT:

Equipped with 10.23 m monoblock boom, 7.28 m arm and 0.4 m<sup>3</sup> bucket (SAE, PCSA heaped), 7 750 kg counterweight.

Shoe type	Shoe width	Operating weight	Ground pressure
Triple grouser	600 mm	28 800 kg	58 kPa (0.59 kgf/cm <sup>2</sup> )
	700 mm	29 100 kg	50 kPa (0.51 kgf/cm <sup>2</sup> )
	800 mm	29 400 kg	44 kPa (0.45 kgf/cm <sup>2</sup> )
	900 mm	29 900 kg	40 kPa (0.41 kgf/cm <sup>2</sup> )

### Basic Machine Weight and Overall width



Excluding front end attachment, additional counterweight, fuel, hydraulic oil and coolant etc.  
Including counterweight.

#### ZX250LC

Shoe width	Weight	Overall width
600 mm	23 400 kg	3 190 mm
700 mm	23 700 kg	3 290 mm
800 mm	24 000 kg	3 390 mm
900 mm	24 500 kg	3 490 mm

#### ZX250LCN

Shoe width	Weight	Overall width
600 mm	23 300 kg	2 990 mm
700 mm	23 600 kg	3 090 mm
800 mm	23 900 kg	3 190 mm
900 mm	24 400 kg	3 290 mm

### BUCKET SPECIFICATIONS AND COMPATIBILITY

#### ZX250LC / ZX250LCN

	Capacity ISO heaped	Width Without side cutters	Weight	Recommendation			
				ZX250LC		ZX250LCN	
				HE15LD	HE18LD	HE15LD	HE18LD
Bucket radius 1230 mm	0.40 m <sup>3</sup>	720 mm	340 kg	◎	○	◎	□
	0.45 m <sup>3</sup>	800 mm	370 kg	◎	□	◎	□
	0.50 m <sup>3</sup>	890 mm	390 kg	◎	□	◎	-
	0.59 m <sup>3</sup>	950 mm	410 kg	◎	-	◎	-
	0.66 m <sup>3</sup>	1 030 mm	430 kg	◎	-	○	-
Slope finishing	-	1 600 mm	430 kg	◇	◇	◇	◇
Max. weight				1 690 kg	1 050 kg	1 560 kg	940 kg

◎ Suitable for materials with density of 1 800 kg/m<sup>3</sup> or less

○ Suitable for materials with density of 1 600 kg/m<sup>3</sup> or less

□ Suitable for materials with density of 1 100 kg/m<sup>3</sup> or less

◇ Slope-finishing service

- Not applicable

• Use the bucket in the range where the total weight of bucket and loading material does not exceed maximum weight described above.

# SPECIFICATIONS

## ZX300LC / ZX300LCN

### ENGINE

Model .....	Isuzu 6HK1X
Type .....	4-cycle water-cooled, common rail direct injection
Aspiration .....	Variable geometry turbocharged, intercooled, cooled EGR
Aftertreatment .....	DOC+CSF+SCR system
No. of cylinders .....	6
Rated power	
ISO 14396 .....	197 kW at 1 900 min <sup>-1</sup>
ISO 9249, net .....	186 kW at 1 900 min <sup>-1</sup>
SAE J1349, net .....	186 kW at 1 900 min <sup>-1</sup>
Maximum torque .....	1 050 Nm at 1 500 min <sup>-1</sup>
Piston displacement .....	7.790 L
Bore and stroke .....	115 mm x 125 mm
Batteries .....	2 x 12 V / 128 Ah

### HYDRAULIC SYSTEM

#### Hydraulic Pumps

Main pumps .....	3 variable displacement axial piston pumps
Maximum oil flow .....	2 x 236 L/min
Pilot pump .....	1 x 210 L/min
Pilot pump .....	1 gear pump
Maximum oil flow .....	34.7 L/min

#### Hydraulic Motors

Travel .....	2 variable displacement axial piston motors
Swing .....	1 axial piston motor

#### Relief Valve Settings

Implement circuit .....	34.3 MPa
Swing circuit .....	32.4 MPa
Travel circuit .....	34.3 MPa
Pilot circuit .....	3.9 MPa
Power boost .....	38.0 MPa

#### Hydraulic Cylinders

##### ZX300LC / ZX300LCN TYPE HE15LD SUPER LONG FRONT

	Quantity	Bore	Rod diameter
Boom	2	135 mm	95 mm
Arm	1	170 mm	115 mm
Bucket	1	115 mm	80 mm

##### ZX300LC / ZX300LCN TYPE HE18LD SUPER LONG FRONT

	Quantity	Bore	Rod diameter
Boom	2	135 mm	95 mm
Arm	1	150 mm	105 mm
Bucket	1	105 mm	75 mm

### UPPERSTRUCTURE

#### Revolving Frame

D-section frame for resistance to deformation.

#### Swing Device

Axial piston motor with planetary reduction gear is bathed in oil. Swing circle is single-row. Swing parking brake is spring-set/hydraulic-released disc type.

Swing speed .....	6.7 min <sup>-1</sup> (rpm)
Swing torque .....	77.6 kNm (7 913 kgfm)

### UNDERCARRIAGE

#### Tracks

Heat-treated connecting pins with dirt seals. Hydraulic (grease) track adjusters with shock-absorbing recoil springs.

#### Numbers of Rollers and Shoes on Each Side

	ZX300LC / ZX300LCN
Upper rollers	2
Lower rollers	8
Track shoes	48
Track guards	3

#### Travel Device

Each track driven by 2-speed axial piston motor. Parking brake is spring-set/hydraulic-released disc type. Automatic transmission system: High-Low.

Travel speeds .....	High : 0 to 5.2 km/h Low : 0 to 3.1 km/h
Maximum traction force .....	246 kN
Gradeability .....	70% (35 degree) continuous

### SOUND LEVEL

Sound level in cab according to ISO 6396 ..... LpA 69 dB(A)  
External sound level according to ISO 6395 and  
EU Directive 2000/14/EC ..... LwA 103 dB(A)

### SERVICE REFILL CAPACITIES

	ZX300LC / ZX300LCN
Fuel tank	510.0 L
Engine coolant	48.0 L
Engine oil	48.0 L
Swing device	12.0 L
Travel device (each side)	9.4 L
Hydraulic system	294.0 L
Hydraulic oil tank	163.0 L
DEF/AdBlue® tank	70.0 L

# SPECIFICATIONS

## ZX300LC / ZX300LCN

### WEIGHTS AND GROUND PRESSURE

#### ZX300LC TYPE HE15LD SUPER LONG FRONT:

Equipped with 8.70 m monoblock boom, 6.10 m arm and 0.7 m<sup>3</sup> bucket (SAE, PCSA heaped), 7 750 kg counterweight.

Shoe type	Shoe width	Operating weight	Ground pressure
Triple grouser	600 mm	33 100 kg	63 kPa (0.64 kgf/cm <sup>2</sup> )
	700 mm	33 500 kg	54 kPa (0.55 kgf/cm <sup>2</sup> )
	800 mm	33 900 kg	48 kPa (0.49 kgf/cm <sup>2</sup> )
	900 mm	34 300 kg	43 kPa (0.44 kgf/cm <sup>2</sup> )

#### ZX300LCN TYPE HE15LD SUPER LONG FRONT:

Equipped with 8.70 m monoblock boom, 6.10 m arm and 0.7 m<sup>3</sup> bucket (SAE, PCSA heaped), 7 750 kg counterweight.

Shoe type	Shoe width	Operating weight	Ground pressure
Triple grouser	600 mm	33 000 kg	62 kPa (0.63 kgf/cm <sup>2</sup> )
	700 mm	33 300 kg	54 kPa (0.55 kgf/cm <sup>2</sup> )
	800 mm	33 700 kg	48 kPa (0.49 kgf/cm <sup>2</sup> )
	900 mm	34 100 kg	43 kPa (0.44 kgf/cm <sup>2</sup> )

#### ZX300LC TYPE HE18LD SUPER LONG FRONT:

Equipped with 10.23 m monoblock boom, 7.28 m arm and 0.4 m<sup>3</sup> bucket (SAE, PCSA heaped), 7 750 kg counterweight.

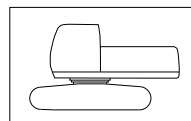
Shoe type	Shoe width	Operating weight	Ground pressure
Triple grouser	600 mm	33 100 kg	63 kPa (0.64 kgf/cm <sup>2</sup> )
	700 mm	33 400 kg	54 kPa (0.55 kgf/cm <sup>2</sup> )
	800 mm	33 800 kg	48 kPa (0.49 kgf/cm <sup>2</sup> )
	900 mm	34 200 kg	43 kPa (0.44 kgf/cm <sup>2</sup> )

#### ZX300LCN TYPE HE18LD SUPER LONG FRONT:

Equipped with 10.23 m monoblock boom, 7.28 m arm and 0.4 m<sup>3</sup> bucket (SAE, PCSA heaped), 7 750 kg counterweight.

Shoe type	Shoe width	Operating weight	Ground pressure
Triple grouser	600 mm	32 900 kg	62 kPa (0.63 kgf/cm <sup>2</sup> )
	700 mm	33 300 kg	54 kPa (0.55 kgf/cm <sup>2</sup> )
	800 mm	33 700 kg	48 kPa (0.49 kgf/cm <sup>2</sup> )
	900 mm	34 100 kg	43 kPa (0.44 kgf/cm <sup>2</sup> )

### Basic Machine Weight and Overall width



Excluding front end attachment, additional counterweight, fuel, hydraulic oil and coolant etc.  
Including counterweight.

#### ZX300LC

Shoe width	Weight	Overall width
600 mm	26 600 kg	3 190 mm
700 mm	27 000 kg	3 290 mm
800 mm	27 400 kg	3 390 mm
900 mm	27 800 kg	3 490 mm

#### ZX300LCN

Shoe width	Weight	Overall width
600 mm	26 500 kg	2 990 mm
700 mm	26 900 kg	3 090 mm
800 mm	27 300 kg	3 190 mm
900 mm	27 600 kg	3 290 mm

### BUCKET SPECIFICATIONS AND COMPATIBILITY

#### ZX300LC / ZX300LCN

	Capacity ISO heaped	Width without side cutters	Weight	Recommendation			
				ZX300LC		ZX300LCN	
				HE15LD	HE18LD	HE15LD	HE18LD
Bucket radius 1230 mm	0.40 m <sup>3</sup>	720 mm	340 kg	◎	○	◎	□
	0.45 m <sup>3</sup>	800 mm	370 kg	◎	□	◎	□
	0.50 m <sup>3</sup>	890 mm	390 kg	◎	□	◎	-
	0.59 m <sup>3</sup>	950 mm	410 kg	◎	-	◎	-
	0.66 m <sup>3</sup>	1 030 mm	430 kg	◎	-	◎	-
Bucket radius 1430 mm	0.52 m <sup>3</sup>	790 mm	450 kg	◎	-	◎	-
	0.60 m <sup>3</sup>	925 mm	480 kg	◎	-	◎	-
	0.70 m <sup>3</sup>	1 005 mm	520 kg	◎	-	○	-
	0.82 m <sup>3</sup>	1 140 mm	560 kg	□	-	□	-
Slope finishing	-	1 600 mm	430 kg	-	◇	-	◇
	-	1 700 mm	520 kg	◇	-	◇	-
Max. weight				2 040 kg	1 060 kg	1 910 kg	1 060 kg

◎ Suitable for materials with density of 1 800 kg/m<sup>3</sup> or less

○ Suitable for materials with density of 1 600 kg/m<sup>3</sup> or less

□ Suitable for materials with density of 1 100 kg/m<sup>3</sup> or less

◇ Slope-finishing service

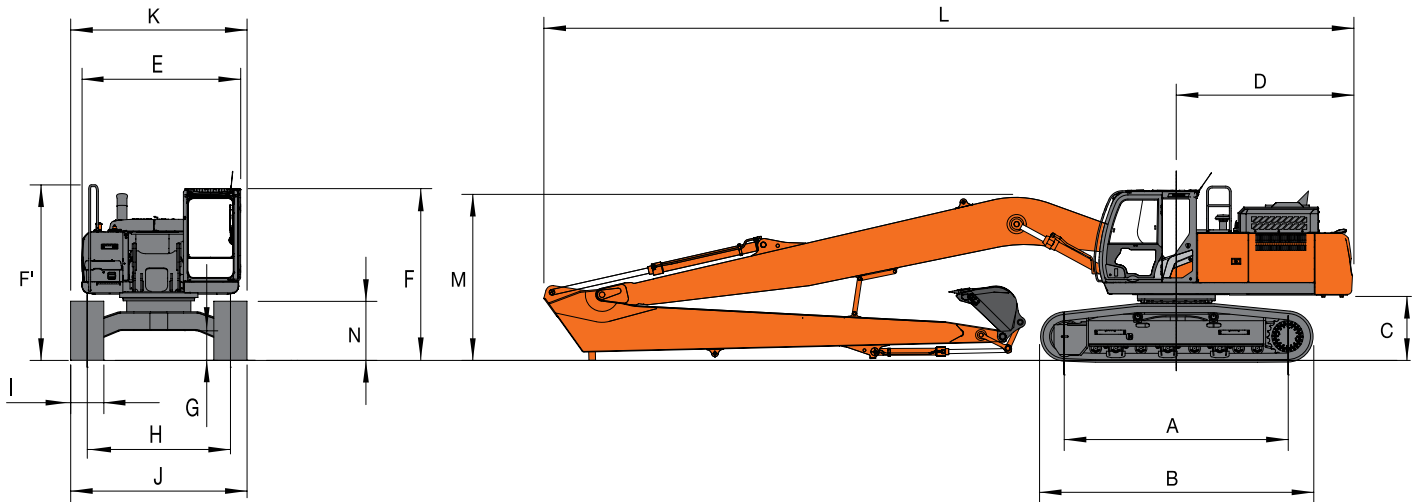
- Not applicable

• Use the bucket in the range where the total weight of bucket and loading material does not exceed maximum weight described above.

# SPECIFICATIONS

## ZX300LC / ZX300LCN

### DIMENSIONS



Unit: mm

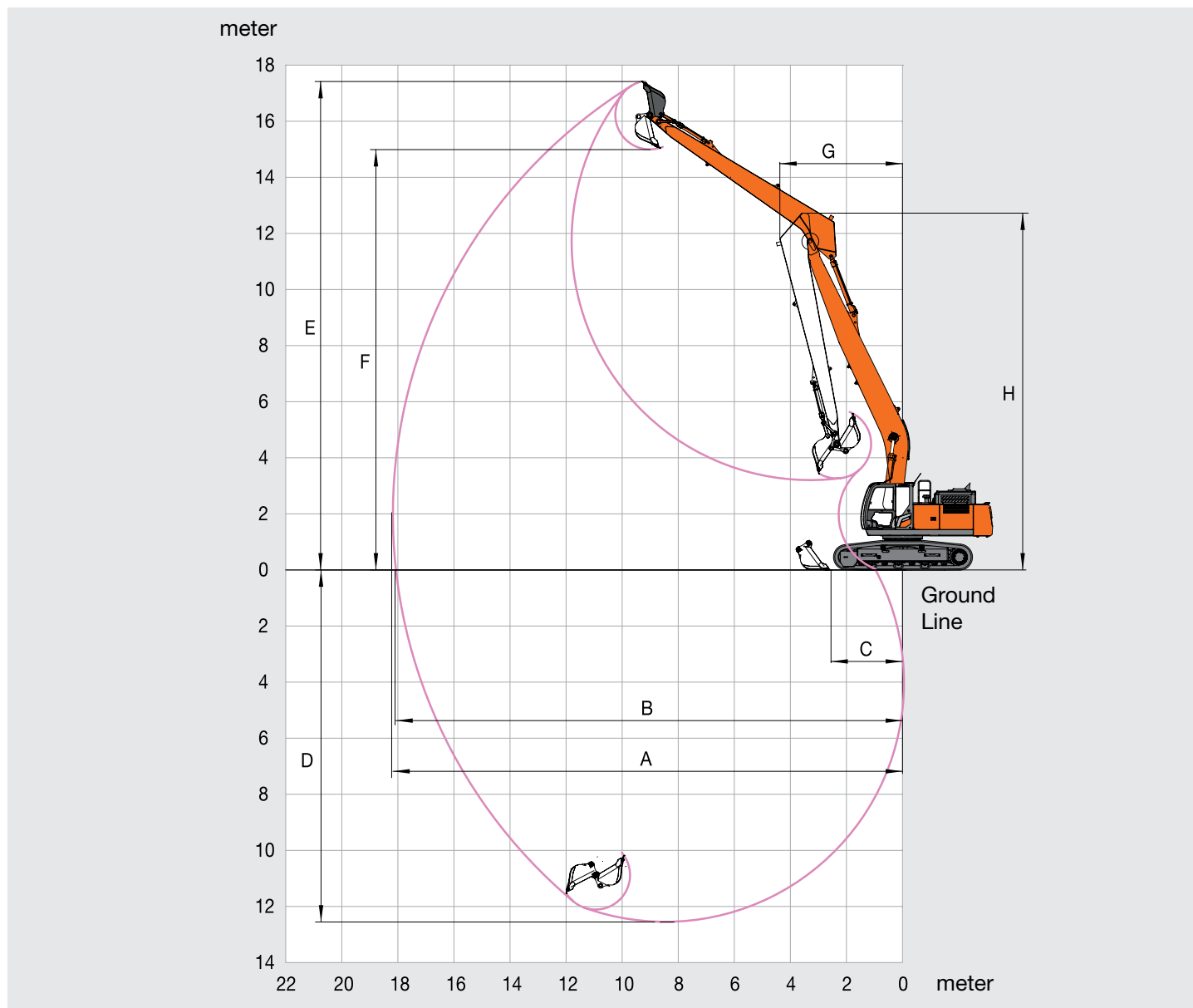
	ZX300LC TYPE HE18LD	ZX300LCN TYPE HE18LD
A Distance between tumblers	4 050	4 050
B Undercarriage length	4 940	4 940
*C Counterweight clearance	1 130	1 130
D Rear-end swing radius	3 250	3 250
E Overall width of upperstructure	2 990	2 990
F Overall height of cab	3 120	3 120
*G Min. ground clearance	510	510
H Track gauge	2 590	2 390
I Track shoe width	600 / 700 / 800 / 900	600 / 700 / 800 / 900
J Undercarriage width	3 190 / 3 290 / 3 390 / 3 490	2 990 / 3 090 / 3 190 / 3 290
K Overall width	3 190 / 3 290 / 3 390 / 3 490	2 990 / 3 090 / 3 190 / 3 290
L Overall length	14 690	14 690
M Overall height of boom	3 030	3 030
N Track height with triple grouser shoes	1 070	1 070

•\*: Excluding track shoe lug

# SPECIFICATIONS

## ZX300LC / ZX300LCN

### WORKING RANGES



Unit: mm

	ZX300LC / ZX300LCN TYPE HE18LD
A Max. digging reach	18 180
B Max. digging reach (on ground)	18 070
C Max. level crowding distance	2 550
D Max. digging depth	12 550
E Max. cutting height	17 420
F Max. dumping height	14 990
G Min. swing radius	4 360
H Min. swing radius height	12 720
Bucket digging force ISO	74 kN (7 560 kgf)
Arm crowd force ISO	52 kN (5 360 kgf)

• Excluding track shoe lug

Note: Working range can be changed, depending on bucket size.

